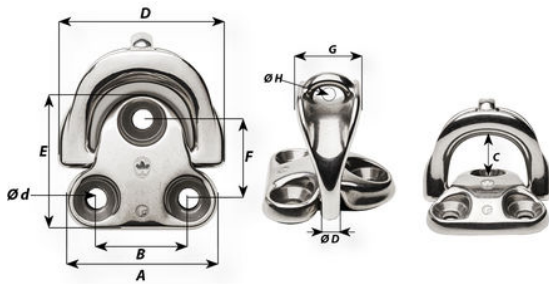


Fairlead padeye - Dia 8 mm

Part #6615



Description

Fairlead folding padeye with dedicated design
Optimized design to prevent rope wear
Becket feature for 2/1 purchase
Reduced footprint (less assembly parts)
For 10 mm rope

Applications

Flying sail furler tensioning
Inhailer trimming
Removable stay
Can not be used for structural applications

Technical information

Materials	Stainless steel grade
 Working load (kg)	2100
Breaking load (kg)	4200
Weight (g)	225
A (mm)	57
B (mm)	35
C (mm)	21.5
D (mm)	59
d diameter (mm)	8
D diameter (mm)	8
E (mm)	51
F (mm)	30
G (mm)	27
H (mm)	8

Wichard strives to ensure, to the best of its ability, the accuracy and the update of the information disseminated on this document, and reserves the right to correct at any time and without notice the content, as well as to evolve its products.

In the case of an industrial application, please contact our sales and technical department to validate the use of these products. The request for certificates can be made directly with the sales department when ordering the products.

Non-contractual pictures.

Caption



Working load (WL) : for nautical applications



Working Load Limit (WLL): for industrial applications only.
The safety factor is 5 times the breaking load.
WLL = Breaking load / 5